

WGS 84 POSITIONS can be plotted directly on this chart

RIVER HUMBER SKITTER CHANNEL

DEPTHS IN METRES
SCALE 1 : 10000

SURVEYED BY
Harbour Master, Humber
ASSOCIATED BRITISH PORTS
11th & 13th November 2024

Depths are in metres and decimetres reduced to the chart datum given below
Underlined figures are drying heights in metres and decimetres above chart datum

TIDAL LEVELS AND CHART DATUM

PLACE	Heights in metres above Chart Datum				Chart Datum and remarks
	M.H.W.S.	M.H.W.N.	M.L.W.N.	M.L.W.S.	
KING GEORGE DOCK	7.6	6.0	2.5	0.7	3.9m below O.D. Newlyn. Being approx. L.A.T.
ALBERT DOCK	7.6	5.9	2.5	0.7	
HUMBER BRIDGE	7.2	5.4	1.9	0.3	3.3m - - - -

Projection: Transverse Mercator. National Grid references are given along borders of chart

1. Light stars without legends represent two fixed lights displayed vertically and are seen as red to port and green to starboard when proceeding upriver.

2. Gas pipelines contain flammable natural gas under high pressure. Any ship damaging the lines would face an immediate fire hazard. Mariners must not anchor in the vicinity of the lines.

Whilst every care was taken in the preparation of this Chart, which is intended to provide Mariners with the data which Associated British Ports possesses at the time of its preparation, ABP gives notice that thereafter, on account of the quickly shifting character of the river bed, no warranty is afforded that such data can be relied upon and, further, no responsibility can be accepted by ABP for any inaccuracy in the Chart or omission therefrom.

Bathymetric soundings shown on this chart are collected to the UKHO standard CATZOC C

SATELLITE-DERIVED POSITIONS

Positions obtained from satellite navigation systems, such as the Global Positioning System (GPS), are normally referred to the World Geodetic System 1984 Datum. Such positions can be plotted directly on this chart.

NATIONAL HORIZONTAL DATUM

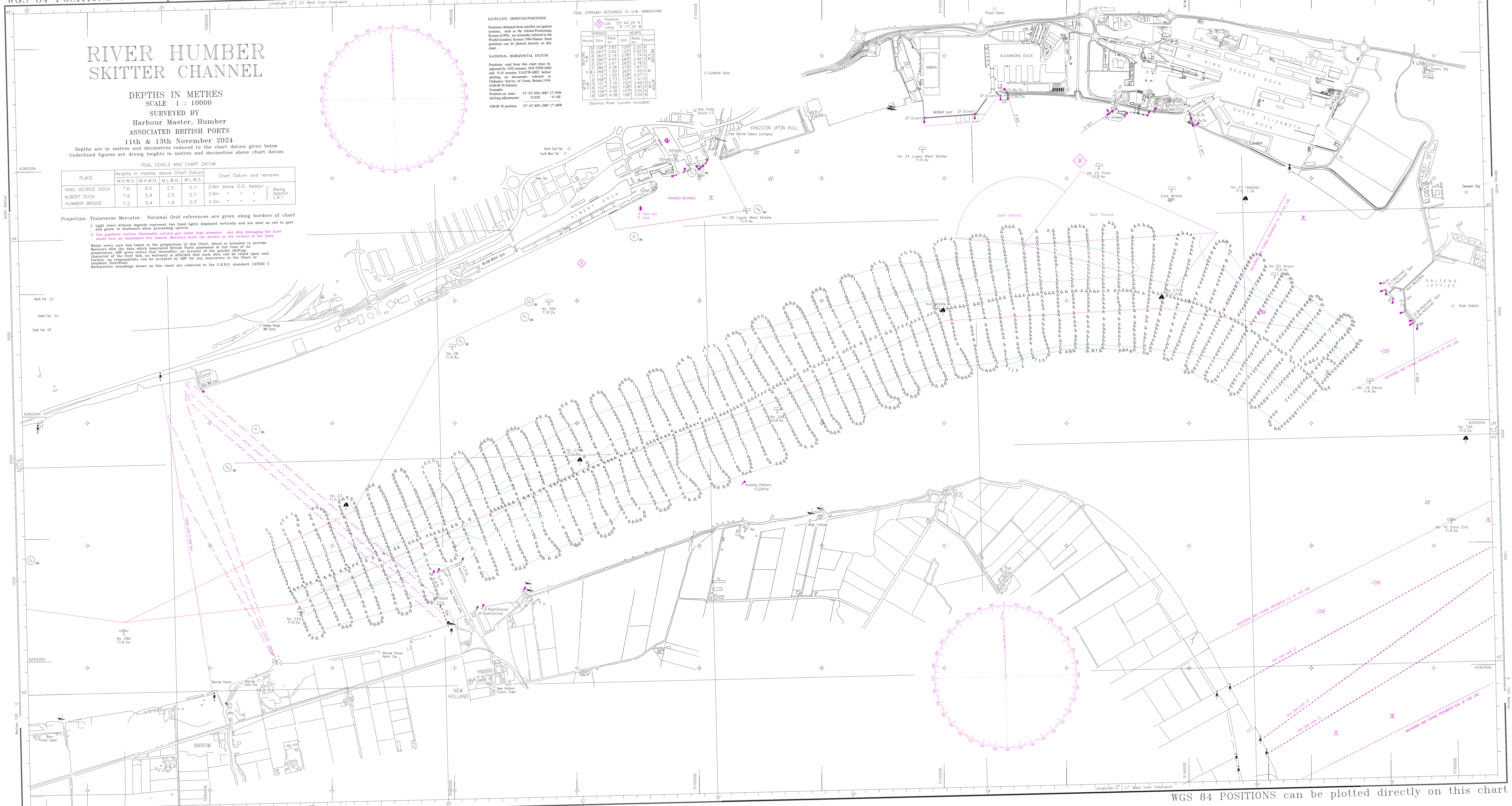
Positions read from this chart must be adjusted by 0.02 metres SOUTHWARD and 0.10 metres EASTWARD before plotting on documents referred to Ordnance Survey of Great Britain 1956 (OSGR 36 Datum).

Example:
Position on chart
lat long adjustments
OSGR 36 position 53° 43' 50N, 009° 17' 50W

TIDAL STREAMS REFERRED TO H.W. MIDDLESBROUGH

Position	SPRINGS		NEAPS	
	Hours	Dirn	Hours	Dirn
ALBERT DOCK	10.2	3.83	10.9	2.25
KING GEORGE DOCK	09.7	2.62	12.0	0.62
ALBERT DOCK	08.7	4.05	08.0	2.96
KING GEORGE DOCK	09.1	2.61	08.3	2.78
ALBERT DOCK	12.2	1.00	22.8	0.37
KING GEORGE DOCK	08.6	1.00	26.9	1.05
ALBERT DOCK	09.6	2.73	10.7	1.41
KING GEORGE DOCK	10.1	3.16	10.0	0.69
ALBERT DOCK	10.7	3.92	10.8	2.83
KING GEORGE DOCK	10.8	4.36	10.7	3.02
ALBERT DOCK	10.8	4.38	10.6	3.04

(Normal River Current Included)



WGS 84 POSITIONS can be plotted directly on this chart